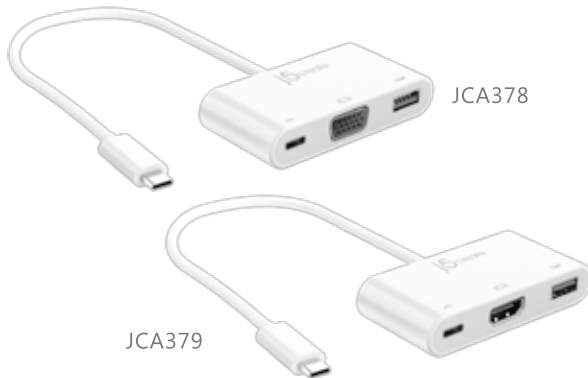


USB Type-C to VGA & USB 3.0 with Power Delivery HDMI & USB 3.0 with Power Delivery



EN : Quick Installation Guide
ES : Guía De Instalación Rápida
DE : Kurzanleitung Für Installation
FR : Guide D'installation Rapide

CZ : Rychlý Průvodce Instalací
HU : Gyors Telepítési Útmutató
日本語 : クイックインストールガイド
繁体中文 : 快速安裝手冊

English

■ Features

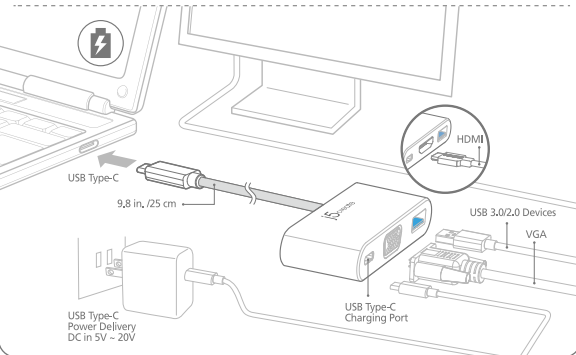
- VGA port supports 1920 x 1080 @ 60 Hz (JCA378)
- HDMI port supports 3840 x 2160 @ 30 Hz (JCA379)
- USB 3.0 port: 5 Gbps and backwards compatible with USB 2.0 and USB 1.1 devices
- Supports upstream charging & power delivery 2.0 via USB Type-C charging port

■ System Requirements

- Available USB Type-C port (USB 3.1 Gen1 Type-C is recommended)
- Available DisplayPort Alternate Mode over USB Type-C connector
- Perfect for MacBook and Chromebook
- Available USB Power Delivery 2.0 over USB Type-C to support upstream charging
- DisplayPort v1.1a required on graphics card to support 1080P @ 60 Hz (JCA378)
- DisplayPort v1.2 required on graphics card or video source to support 4K @ 30 Hz (JCA379)

■ Notes

- If you are using a high-powered USB device please attach the Type-C power adapter to the JCA378/JCA379 power delivery port to ensure maximum performance
- To ensure files copy completely, do not remove the Type-C power adapter while copying files



Español

■ Características

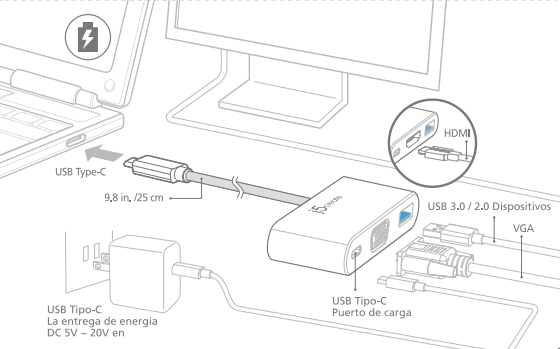
- Puerto VGA soporta 1920x1080 @ 60 Hz (JCA378)
- Puerto HDMI soporta 3840 x 2160 @ 30 Hz (JCA379)
- Puerto USB 3.0 5Gbps compatible con dispositivos USB 2.0 y USB 1.1
- Soporta la carga de contracorriente y la entrega de potencia 2.0 via USB Tipo-C puerto de carga

■ Requisitos del Sistema

- Tipo-C puerto USB disponible (se recomienda USB 3.1 Gen1 Tipo-C)
- Modo de visualización alternativo disponible sobre el conector USB Tipo-C
- Perfecto para MacBook y Chromebook
- USB disponible la entrega 2.0 de potencia a través de USB Tipo-C para apoyar la carga de contracorriente
- V1.1a DisplayPort requiere en la tarjeta de gráfica para apoyar 1080p @ 60 Hz Resolución (JCA378)
- V1.1a DisplayPort requiere en la tarjeta de gráfica para apoyar 4K @ 30 Resolución (JCA379)

■ Notas

- Si está utilizando un dispositivo USB de alta potencia adjunte el Tipo-C adaptador de alimentación al puerto de entrega de potencia JCA378/JCA379 para garantizar el máximo rendimiento
- Para asegurar los archivos de copia por completo, no retire el adaptador de alimentación de Tipo-C



Français

■ Caractéristiques

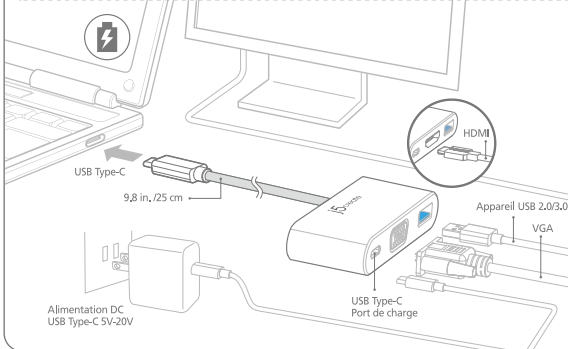
- Port VGA soutenant 1920x1080 @ 60 Hz (JCA378)
- Port HDMI soutenant 3840 x 2160 @ 30 Hz (JCA379)
- Port USB 3.0 rétrograde à 5Gbps avec les appareils USB 2.0 et 1.1
- Soutient chargement et alimentation 2.0 à travers le port USB Type C de Chargement

■ Système Requis

- Port USB Type C disponible (USB 3.1 Gen1 Type-C est recommandé)
- Mode d'affichage alternatif disponible à travers la connexion USB Type-C
- Parfait pour MacBook et Chromebook
- Livraison d'alimentation 2.0 USB disponible sur USB Type C pour soutenir la charge en amont
- DisplayPort v1.1a requis sur la carte graphique pour le soutien de résolution 1080p @ 60 Hz (JCA378)
- DisplayPort v1.1a requis sur la carte graphique pour le soutien de résolution 4K @ 30 Hz (JCA379)

■ A Noter

- Si vous utilisez des appareils USB à haute consommation, veuillez brancher la prise Type C dans le port d'alimentation du JCA378/JCA379 pour assurer une performance maximale
- Pour vous assurez du copiage complet de fichiers, ne dé-branchez pas la prise Type C pendant le copiage



Deutsch

■ Eigenschaften

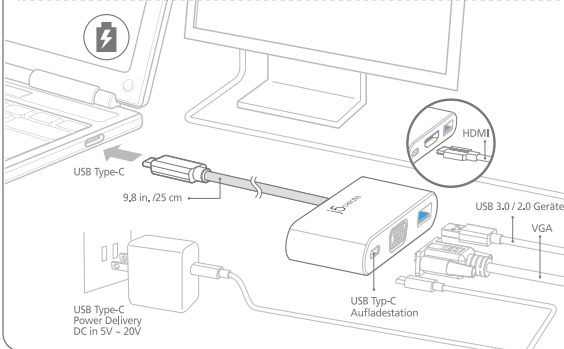
- VGA-Anschluss unterstützt 1920 x 1080 @ 60 Hz (JCA378)
- HDMI-Anschluss unterstützt 3840 x 2160 @ 30 Hz (JCA379)
- USB 3.0-Port 5 Gbps rückwärts kompatibel mit USB 2.0 und USB 1.1-Geräte
- Unterstützt Upstream-Lade & Leistungsabgabe 2.0 über USB-Typ-C-Ladeanschluss

■ System Anforderungen

- Freier USB-Typ-C-Anschluss (USB 3.1 Gen 1 Typ-C wird empfohlen)
- Verfügbare Anzeigealternativmodus über USB-Typ-C-Stecker.
- Perfekt für MacBook und Chromebook
- Verfügbare USB Power Delivery 2.0 über USB Type-C zur Unterstützung der Upstream-Aufladung
- DisplayPort v1.1a erforderlich auf Grafikkarte zur Unterstützung von 1080P @ 60 Hz (JCA378)
- DisplayPort v1.2 erforderlich auf Grafikkarte oder Videoquelle zur Unterstützung von 4K @ 30 Hz (JCA379)

■ Notizen

- Wenn Sie einen High-Power-USB-Gerät verwenden Sie bitte den Typ-C befestigen Stromadapter in den Anschluss JCA378/JCA379 Leistungsabgabe maximale Leistung zu gewährleisten.
- Um sicherzustellen, Dateien zu kopieren vollständig, entfernen Sie nicht den Typ-C-Netzteil, während Kopieren von Dateien



STOP!

If you have any problems with this product please contact our technical support team before returning it to the store.

TECHNICAL SUPPORT

Customer Service : **888-988-0488**
 Technical Support : **888-689-4088**
 Email : **service@j5create.com**
 Service Hours : **Mon. - Fri. 10:00 - 18:00 E.S.T**
 Live Chat : **www.j5create.com/livechat**
 Support Ticket : **tickets.j5create.com**

SOPORTE TÉCNICO

Número gratuito : +1-888-988-0488
 Horas de operación :
 Lun - Vier : 10:00 -18:00 U.S.A-E.S.T
 Correo electrónico : service@j5create

TECHNISCHER SUPPORT

Kostenloser Anruf bei : +1-888-988-0488
 Sprechstunden :
 Mon.-Frei. 10.00 – 18.00 U.S.A-E.S.T
 E-mail : service@j5create.com

SUPPORT TECHNIQUE

Numéro gratuit : +1-888-988-0488
 Heures d'ouverture :
 lun.-Ven. 10:00 – 18:00 U.S.A-E.S.T
 Email : service@j5create.com

TECHNICKÁ PODPORA

Zákaznická linka : 888-988-0488
 Technická podpora : 888-689-4088
 Mon.-Frei. 10.00 – 18.00 U.S.A-E.S.T
 E-mail : service@j5create.com
 Online Chat : **www.j5create.com/livechat**
 Žádost o pomoc : **tickets.j5create.com**

TECHNIKAI SEGÍTSÉG

Vevőszolgálat (angol nyelven) : 888-988-0488
 Technikai támogatás (angol nyelven) : 888-689-4088
 Mon.-Frei. 10.00 – 18.00 U.S.A-E.S.T
 E-mail : service@j5create.com
 Live Chat : **www.j5create.com/livechat**
 Support Ticket : **tickets.j5create.com**

テクニカルサポート

お客様相談センター : 03-4590-7650
 電子メール : j5_support@solnet.ne.jp
 テクニカルサポートやその他のご相談は下記の時間にごさいますようお願い申し上げます
 営業時間:平日: 9:30~11:30/13:30~17:30

技術支援資訊

美國客服專線 : +1-888-988-0488
 台灣客服專線 : +886-2-2269-5533#19
 客服時間 :
 星期一至星期五 10:00-18:00 (台灣時間)
 Email信箱 : service.tw@j5create.com

Česky

■ Funkce

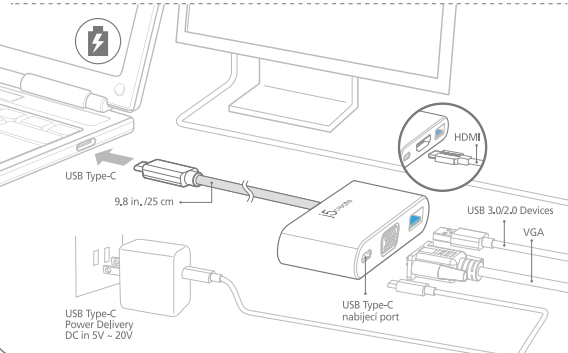
- VGA port podporuje rozlišení 1920 x 1080 @ 60 Hz (JCA378)
- HDMI port podporuje rozlišení 3840 x 2160 @ 30 Hz (JCA379)
- USB port 3.0 5Gbps zpětně kompatibilní s USB 2.0 a USB 1.1
- Podporuje upstream nabíjení a napájení dodávkou 2.0 přes nabíjecí USB Type-C portu

■ Požadavky na systém

- Type-C je k dispozici USB port (USB 3.1 Gen 1 Type-C je doporučeno)
- K dispozici Display Alternate Mode přes USB konektor typu C.
- Ideální pro MacBook a Chromebook
- K dispozici USB Power Delivery 2.0 přes USB Type-C podporuje upstream nabíjení
- DisplayPort v1.1a nutné na grafickou kartu pro podporu 1080P @ 60 Hz (JCA378)
- DisplayPort v1.2 nutné na grafickou kartu nebo video zdroje na podporu 4K @ 30 Hz (JCA379)

■ Poznámky

- Pokud používáte vysoce výkonný USB zařízení přiložte Type-C napájecí adaptér do aplikátoru napájení portu JCA378/JCA379 pro zajištění maximálního výkonu.
- Pro zajištění soubory kopírovat úplně, zatímco neodstraňujte síťový adaptér Type-C Kopírování souborů



Magyarország

■ Jellemzők

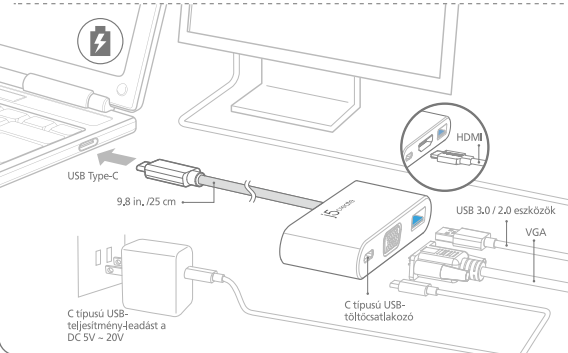
- VGA port támogatja 1920 x 1080 @ 60 Hz (JCA378)
- HDMI port támogatja 3840 x 2160 @ 30 Hz (JCA379)
- USB 3.0 port 5Gbps visszafelé kompatibilis az USB 2.0 és USB 1.1 eszközök
- Támogatja upstream töltés és teljesítmény-leadás 2.0 USB Type-C töltőcsatlakoz

■ Rendszerkövetelmények

- Elérhető USB Type-C port (USB 3.1 Gen 1 Type-C ajánlott)
- Elérhető megjelenítése Alternatív mód felett C típusú USB-csatlakozó
- Tökéletes MacBook és Chromebook
- Szabad USB Power Delivery 2.0 felett C típusú USB-támogatása upstream töltés
- DisplayPort v1.1a szükség grafikus kártya támogatása 1080p @ 60 Hz (JCA378)
- DisplayPort v1.2 szükséges a grafikus kártya vagy a videó forrás támogatására 4K @ 30 Hz (JCA379)

■ Megjegyzések

- Ha egy nagy teljesítményű USB eszközt kérjük, csatlakoztassa a C típusú hálózati adaptert a JCA378/JCA379 teljesítmény-leadás port biztosítja a maximális teljesítményt.
- Ahhoz, hogy biztosítsuk a fájlok másolása teljesen, ne távolítsa el a C típusú hálózati adaptert fájlok másolása



日本語

■ 特徴

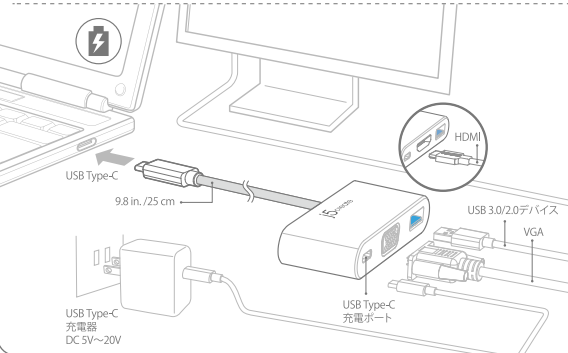
- VGAポート:1920 x 1080 @ 60 Hz対応 (JCA378)
- HDMIポート:3840 x 2160 @ 30 Hz対応 (JCA379)
- USB3.0ポート:超高速5Gbps (理論値) USB2.0、USB1.1 下位互換性
- USB Type-C充電ポート:パワーデリバリー2.0対応で機器の充電が可能

■ 必須環境

- 利用可能なUSB Type-Cポート (USB3.1のGen1Type-C推奨)
- 利用可能なDisplay Alternate Modeに対応したType-Cコネクタ。
- MacBookやChromebookに最適
- アップストリーム充電をサポートするUSB Type-Cで利用可能なUSB Power Delivery 2.0
- 1080P @ 60 Hz (JCA378)をサポートするためにグラフィックカードに必要なDisplayPort v1.1a
- 4K @ 30Hz (JCA379)をサポートするために、グラフィックカードまたはビデオソースに必要なDisplayPort v1.2

■ ご注意

- 大電流を必要とするUSB機器を使用する場合は、Type-C電源アダプターをJCA378/JCA379のパワーデリバリーポートに接続してください。
- ファイルをコピーする際は、コピーが完了するまで、Type-Cの電源アダプターを外さないでください。



繁體中文

■ 特色

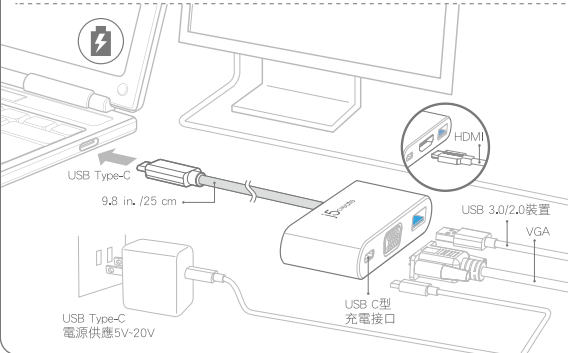
- VGA埠支援最高解析度1920 x 1080 @ 60 Hz (JCA378)
- HDMI埠支援最高解析度3840 x 2160 @ 30 Hz (JCA379)
- USB 3.0 埠,高達5Gb/s傳輸速率,向下兼容USB 2.0和1.1設備
- USB Type-C埠支援USB Power Delivery 2.0 ,提供向上充電功能

■ 系統需求

- USB Type-C埠(建議USB 3.1 Gen 1)
- Type-C 埠需支援DP Alt-Mode
- 完整支援Macbook和Chromebook
- 支援Power Delivery 2.0透過USB Type-C向上充電
- 顯卡需支援DisplayPort v1.1a 1080p @ 60 Hz (JCA378)
- 顯卡需支援DisplayPort v1.2和影片來源需支援4K @ 30 Hz (JCA379)

■ 注意

- 如果您使用的是高功率USB設備請附上Type-C電源適配器插入JCA378/JCA379電源輸出，以確保最佳的性能。
- 為確保檔案完整性，請避免在複製檔案時插拔Type-C 電源適配器。



■ Online Support

Please visit the j5create website (www.j5create.com) to find the latest software for your device. If you are still experiencing issues, you can submit a trouble ticket through our j5 web support. Your ticket will be responded to within 24 hours.

■ Telephone Support

Please call us @ +1-888-689-4088 and one of our support technicians will be very happy to assist you. We stand behind our products and it is our goal to provide you with world class support.

- Regulatory Compliance : FCC / CE / RCM
- Reglas de Conformidad : FCC / CE / RCM
- Regulatorische Erfüllung : FCC / CE / RCM
- Conformité réglementaire : FCC / CE / RCM
- 法規制的遵守 : FCC / CE / RCM
- 認證 : FCC / CE / RCM

■ Limited Warranty

j5create offers a limited 1-year warranty. User's wear & tear damage is not included.

The user shall call or e-mail j5create's customer service with information regarding the defect(s) of the product and obtain a return authorization number. Users are responsible for one way return freight cost and we will take care of one way freight back. In order to obtain a return authorization number, users should have the following information handy when calling or emailing the service team:

- a copy of the original purchase invoice to verify your warranty
- a product serial number
- a description of the problem
- customer's name, address, and telephone number

j5create does not warrant that the operation of the product will be uninterrupted or error-free. j5create is not responsible for damage arising from failure to follow instructions relating to the product's use. This warranty does not apply to:(a) consumable parts, unless damage has occurred due to a defect in materials or workmanship; (b) cosmetic damage, including but not limited to scratches, dents, and broken plastic on ports; (c) damage caused by use with non-j5create products; (d) damage caused by natural disasters (flood, fire, earthquake, lightning strike, typhoon etc.); (e) damage caused by human misuse (lost, accident, abuse, misuse or other external causes); (f) damage caused by operating the product outside the permitted or intended uses described by j5create; (g) damage caused by service (including upgrades and expansions) performed by anyone who is not a representative of j5create or a j5create Authorized Service Provider; (h) a product or part that has been modified to alter functionality or capability without the written permission of j5create; or (i) if any j5create serial number on the product has been removed or defaced. If such a situation occurs, j5create will calculate the cost of materials and repair for your reference. This warranty is given by j5create in lieu of any other warranties expressed or implied.

Copyright © 2016 j5create. All rights reserved. All trade names are registered trademarks of their respective owners. Features and specifications are subject to change without notice. Product may not be exactly as shown in the diagrams.